

NLE11KK.2

Energy-optimized Compressor

R600a

220-240V 50Hz

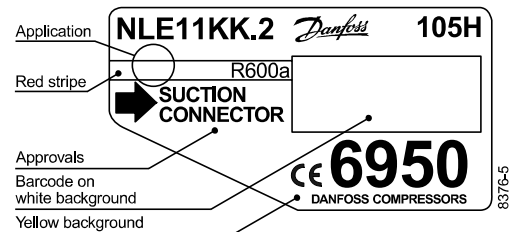
Data Sheet (Replaces CD.53.F1.02)

General

| | |
|-------------|------------------|
| Compressor | NLE11KK.2 |
| Code number | 105H6950 |

Application

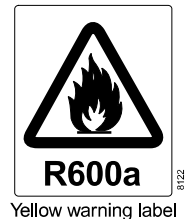
| | | |
|--------------------------------|------|---------------|
| Application | | LBP |
| Evaporating temperature range | °C | -35 to -10 |
| Voltage range | V/Hz | 198 - 254 /50 |
| Motor type | | RSIR/RSCR |
| Max. ambient temperature | °C | 38 |
| Comp. cooling at ambient temp. | 32°C | S |
| | 38°C | S |



- S = Static cooling normally sufficient
- O = Oil cooling
- F₁ = Fan cooling 1.5 m/s
(compressor compartment temperature equal to ambient temperature)
- F₂ = Fan cooling 3.0 m/s necessary

Design

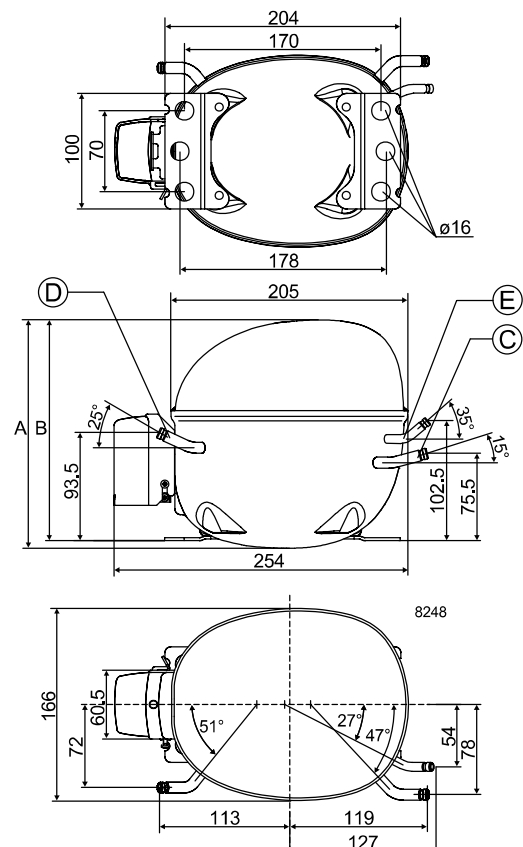
| | | |
|-------------------------------------|-----------------|-------|
| Displacement | cm ³ | 11.15 |
| Oil quantity | cm ³ | 270 |
| Maximum refrigerant charge | g | 150 |
| Free gas vol. in compressor | cm ³ | 2310 |
| Weight without electrical equipment | kg | 10.0 |


Motor

| | | |
|---|------|-----------------------------|
| Motor size | watt | 140 |
| LRA (rated after 4 sec. UL984) LST | A | 5.0 |
| Cut-in current LST | A | 9.4 |
| Resistance, main and start winding (25°C) | Ω | 14.9/17.9 |
| Approvals | | EN 60335-2-34 with Annex AA |

Dimensions

| | | | |
|-------------------------|------------------|---|-----------------|
| Height | mm | A | 197 |
| | | B | 191 |
| Suction connector | location/I.D. mm | C | 6.2 ±0.09 |
| Process connector | location/I.D. mm | D | 6.2 ±0.09 |
| Discharge connector | location/I.D. mm | E | 5.0 +0.12/+0.20 |
| Compressors on a pallet | pcs. | | 80 |



Capacity (EN 12900/CECOMAF)

watt

| | | | | | | | |
|-----------|-----|-----|-----|-------|-----|-----|-----|
| Comp.°C | -35 | -30 | -25 | -23.3 | -20 | -15 | -10 |
| NLE11KK.2 | 78 | 103 | 133 | 144 | 169 | 214 | 271 |

Capacity (ASHRAE)

watt

| | | | | | | | |
|-----------|-----|-----|-----|-------|-----|-----|-----|
| Comp.°C | -35 | -30 | -25 | -23.3 | -20 | -15 | -10 |
| NLE11KK.2 | 94 | 126 | 162 | 175 | 206 | 261 | 330 |

Power consumption

watt

| | | | | | | | |
|-----------|-----|-----|-----|-------|-----|-----|-----|
| Comp.°C | -35 | -30 | -25 | -23.3 | -20 | -15 | -10 |
| NLE11KK.2 | 86 | 103 | 119 | 124 | 135 | 153 | 173 |

Current consumption

A

| | | | | | | | |
|-----------|------|------|------|-------|------|------|------|
| Comp.°C | -35 | -30 | -25 | -23.3 | -20 | -15 | -10 |
| NLE11KK.2 | 0.70 | 0.74 | 0.80 | 0.81 | 0.85 | 0.90 | 0.96 |

COP (EN 12900/CECOMAF)

W/W

| | | | | | | | |
|-----------|------|------|------|-------|------|------|------|
| Comp.°C | -35 | -30 | -25 | -23.3 | -20 | -15 | -10 |
| NLE11KK.2 | 0.90 | 1.01 | 1.12 | 1.16 | 1.25 | 1.40 | 1.57 |

COP (ASHRAE)

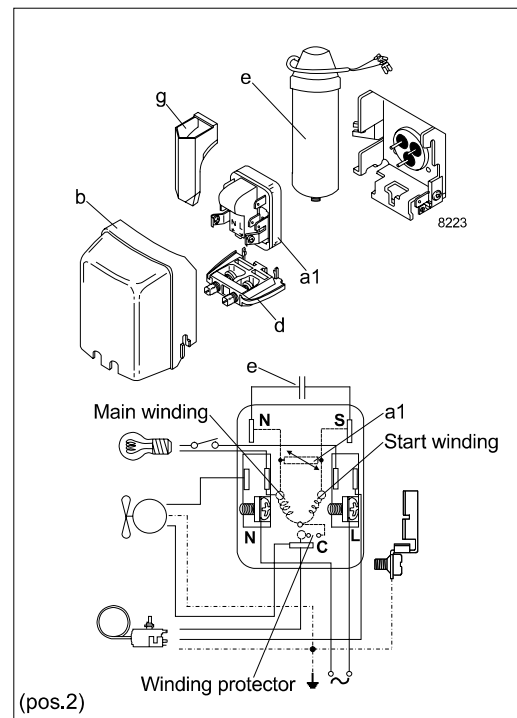
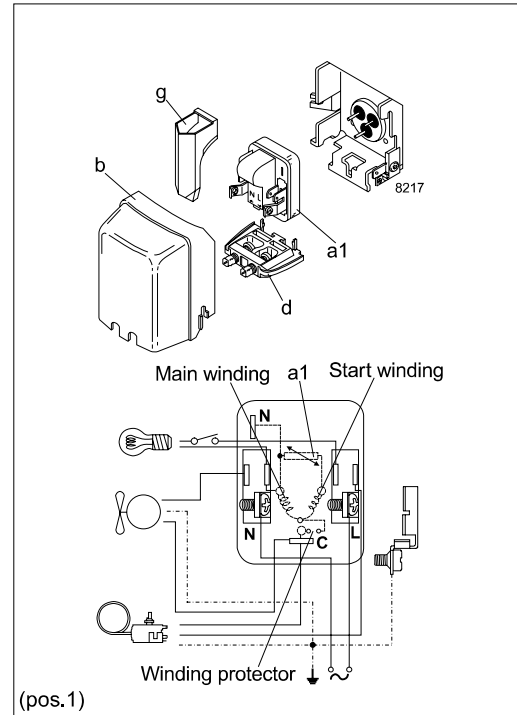
W/W

| | | | | | | | |
|-----------|------|------|------|-------|------|------|------|
| Comp.°C | -35 | -30 | -25 | -23.3 | -20 | -15 | -10 |
| NLE11KK.2 | 1.10 | 1.22 | 1.36 | 1.41 | 1.52 | 1.70 | 1.91 |

| | | |
|-------------------------------|------------------|--------|
| Test conditions | EN 12900/CECOMAF | ASHRAE |
| Condensing temperature | 55°C | 55°C |
| Ambient and suction gas temp. | 32°C | 32°C |
| Liquid temperature | 55°C | 32°C |
| Static cooling, 220V 50Hz, | | |
| PTC consumption incl. | | |

Accessories

| Devices | Fig. | NLE11KK.2 |
|-----------------------------------|---------------|-----------|
| PTC starting device 6.3 mm spades | a1 (pos.1) | 103N0011 |
| | | 103N0018 |
| PTC starting device 4.8 mm spades | a1 (pos.2) | 103N0016 |
| | | 103N0021 |
| Cover | b | 103N2010 |
| Cord relief | d | 103N1010 |
| Run capacitor 4 µF (optional) | e | 117-7117 |
| | | 117-7119 |
| Protection screen for PTC | g | 103N0476 |
| Mounting accessories | | |
| Bolt joint for one compressor | | 118-1917 |
| Bolt joint in quantities | | 118-1918 |
| Snap-on in quantities | | 118-1919 |



Danfoss can accept no responsibility for possible errors in catalogues, brochures and other printed material. Danfoss reserves the right to alter its products without notice. This also applies to products already on order provided that such alterations can be made without subsequent changes being necessary in specifications already agreed. All trademarks in this material are property of the respective companies. Danfoss and the Danfoss logotype are trademarks of Danfoss A/S. All rights reserved.

